

www.santosh.ac.in
admissioncell@santosh.ac.in



SANTOSH
Deemed to be University



Leading the Way to the Future

2024



SANTOSH
HOSPITALS
Ambedkar Road, Ghaziabad



SANTOSH
MEDICAL COLLEGE & HOSPITAL
Santosh Nagar, Ghaziabad



SANTOSH
DENTAL COLLEGE & HOSPITAL
Santosh Nagar, Ghaziabad



SANTOSH
Institute of Allied Health Sciences
Santosh Nagar, Ghaziabad

www.santosh.ac.in
admissioncell@santosh.ac.in



PROGRAMS OFFERED BY THE UNIVERSITY

MBBS

BDS

MD

MS

B.Sc Health
Sciences

MDS

M.Sc Health
Sciences

Ph.D.



www.santosh.ac.in
admissioncell@santosh.ac.in



Shree Maha Ganapati Temple

Shree Maha Ganapati Temple, a testament to our reverence for tradition and spirituality. As we celebrate this divine addition to our campus, we invite you to delve into the blessings of Maha Ganapati - the remover of obstacles, the bestower of blessings and the embodiment of wisdom.

We strongly believe that when there is divine intervention, both students and medical professionals can achieve remarkable feats. This magic has the power to elevate India to the next level and establish it as a Vishvaguru.





Medical & Allied Health Sciences Programs under Santosh Medical College & Hospital

Undergraduate Program

- MBBS (Bachelor of Medicine, Bachelor of Surgery)

Postgraduate Program

- MD Anatomy
- MD Physiology
- MD Biochemistry
- MD Pathology
- MD Microbiology
- MD Pharmacology
- MD Community Medicine
- MD General Medicine
- MD Anaesthesia
- MD Pediatrics
- MD TB & Chest
- MD Psychiatry
- MS General Surgery
- MS Orthopaedics
- MS Obstetrics & Gynaecology
- MS Ophthalmology
- MS ENT
- MD Dermatology, Venerology & Leprosy
- MD Emergency Medicine
- MD Radiodiagnosis
- MD Immuno Haematology & Blood Transfusion (IHBT)

Undergraduate Medical B.Sc Program

- B.Sc Clinical Nutrition & Dietetics
- B.Sc Anaesthesia and Operation Theatre Technology
- B.Optomety
- B.Sc Emergency and Trauma Care Technology
- B.Sc Orthopedics Assistant and Plaster Techniques
- B.Sc Critical Care Technology

Postgraduate Medical M.Sc Program

- M.Sc Medical Anatomy/ Physiology/ Biochemistry/ Microbiology/ Pharmacology
- M.Sc Medical Imaging Technology
- M.Sc Medical Lab Technology
- M.Sc Clinical Psychology
- M.Sc Forensic Science
- M.Optomety
- M.Sc Healthcare Quality Management
- Master of Hospital Administration Corporate (MHA - Corporate)
- Master of Hospital Administration (MHA)

Ph.D. Program

- Ph.D Medical Anatomy
- Ph.D Medical Physiology
- Ph.D Medical Biochemistry
- Ph.D Community Medicine
- Ph.D Medical Microbiology
- Ph.D Pediatrics (Neonatology)
- Ph.D Respiratory Medicine
- Ph.D. Obstetrics & Gynaecology
- Ph.D. Pharmacology
- Ph.D. Haematopath
- Ph.D. Clinical Psychology
- Ph.D Orthopaedics (Physiotherapy)
- Ph.D Orthopaedics (Occupational Therapy)
- Ph.D Medical Imaging Technology (Radio Diagnosis)

Postgraduate Diploma Program

- Diploma in Public Health

www.santosh.ac.in
admissioncell@santosh.ac.in



Dental and Allied Health Sciences Programs under Santosh Dental College & Hospital

Undergraduate Program

- BDS (Bachelor of Dental Surgery)

Postgraduate Program

- MDS Conservative Dentistry & Endodontics
- MDS Orthodontics & Dentofacial Orthopedics
- MDS Oral & Maxillofacial Surgery
- MDS Oral & Maxillofacial Pathology & Oral Microbiology

- MDS Pediatric & Preventive Dentistry
- MDS Periodontology
- MDS Prosthodontics and Crown & Bridge

Ph.D. Program

- Ph.D Orthodontics & Dentofacial Orthopaedics
- Ph.D Oral & Maxillofacial Surgery
- Ph.D Pediatric & Preventive Dentistry
- Ph.D Integrated Implantology

Diploma Program

- Diploma in Dental Hygienist Course (DHC)
- Diploma in Dental Mechanics Course (DMC)

www.santosh.ac.in
admissioncell@santosh.ac.in



Allied Health Sciences Programs under Santosh Paramedical College & Hospital**

Undergraduate Program

- BPT (Bachelor of Physiotherapy)
- BOT (Bachelor of Occupational Therapy)
- BMLS (Bachelor of Medical Laboratory Science)
- BMRIT (Bachelor of Medical Radio Imaging Technology)
- BOMM (Bachelor of Medical Microbiology)

Postgraduate Program

- MPT (Master of Physiotherapy)- Neurology
- MPT(Master of Physiotherapy)- Orthopaedics
- MPT (Master of Physiotherapy)- Cardiothoracic & Pulmonary Diseases
- MOT (Master of Occupational Therapy)- Neurology
- MOT (Master of Occupational Therapy)- Orthopaedics
- MOT (Master of Occupational Therapy)- Pediatrics

Nursing Programs under Santosh College of Nursing

- GNM (Diploma in General Nursing & Midwifery)
- Post Basic Nursing*
- B.Sc. Nursing (Bachelor of Science in Nursing)
- Master in Nursing- Community Health
- Master in Nursing- Obstetrics & Gynecology
- Master in Nursing- Medical & Surgical
- Master in Nursing- Mental Health
- Master in Nursing- Pediatrics

Diploma Program

- DMLT (Diploma in Medical Lab Technology)
- DO (Diploma in Optometry)
- D. X-Ray (Diploma in Radio Technology)
- DOTT (Diploma in OT Technician)

* T & C Apply

** Offered by Santosh Paramedical College & Hospital

www.santosh.ac.in
admissioncell@santosh.ac.in



Admission Process

for **MBBS/BDS, MD/MS/MDS**
through Central Government Counselling
conducted by
DGHS (Ministry of Health & Family Welfare)

Round 1 >> **Round 2** >> **Mopup Round** >> **SV Round**

STEP 1: Registration & Payment

Current Year NEET- Qualifiers, Register at www.mcc.nic.in
by Paying DGHS announced Deemed University Counseling
Refundable Security + Registration fees i.e Rs 2,00,000+
Rs 5000

Note- This fee is accepted through Debit/Credit Card/ Net
Banking only.

Please ensure your card transaction limits must be above
Rs. 2,05,000/- + Applicable Taxes.

STEP 2 Choice Filling & Locking:

Choose Course, then select Institute, (Example below)-

- **Santosh Medical College and Hospital, Ghaziabad (Deemed) - MBBS/MD/MS**
- **Santosh Dental College and Hospital, Ghaziabad (Deemed) - BDS/MDS**

Lock your choice and Wait for Allotment Result as per
counseling announced schedule.

Disclaimer: The above information gives a general overview and is only for indicative purposes. For exact details / information, kindly visit www.mcc.nic.in

www.santosh.ac.in
admissioncell@santosh.ac.in



**Nurturing
Medical minds
since 1990**



January
2024

SUN	MON	TUE	WED	THU	FRI	SAT
	1	2	3	4	5	6
7	8	9	10	11	12	13
14	15	16	17	18	19	20
21	22	23	24	25	26	27
28	29	30	31			

NAAC Accredited Premier Deemed to be University | Excellence in Education | Healthcare & Research
800+ Bedded Teaching Hospital | Emphasizing Continuous Learning | Cultivating Empathy & Patient-Centered Care



Calendar Planner for **January 2024**

Sunday	Monday	Tuesday	Wednesday	Thursday	Friday	Saturday
	1	2	3	4	5	6
7	8	9	10	11	12	13
14	15	16	17 Guru Govind Singh Jayanti	18	19	20
21	22	23	24	25 Birthday of Moh. Hazrat Ali	26 Republic Day	27
28	29	30	31			




Most Approachable Location in Delhi NCR



February

2024

SUN	MON	TUE	WED	THU	FRI	SAT
				1	2	3
4	5	6	7	8	9	10
11	12	13	14	15	16	17
18	19	20	21	22	23	24
25	26	27	28	29		

www.santosh.ac.in
admissioncell@santosh.ac.in



Calendar Planner for February 2024

Sunday	Monday	Tuesday	Wednesday	Thursday	Friday	Saturday
				1	2	3
4	5	6	7	8	9	10
11	12	13	14	15	16	17
18	19	20	21	22	23	24
25	26	27	28	29		

www.santosh.ac.in
admissioncell@santosh.ac.in



Periodic Mode of Fee Payment for your Academic Journey

1st QUARTER 2nd QUARTER 3rd QUARTER 4th QUARTER

Q U A R T E R L Y M O D E F E E S P A Y M E N T

March 2024

SUN	MON	TUE	WED	THU	FRI	SAT
31					1	2
3	4	5	6	7	8	9
10	11	12	13	14	15	16
17	18	19	20	21	22	23
24	25	26	21	28	29	30

Allows students to pay fees in installments reducing financial burden



Calendar Planner for **March 2024**

Sunday	Monday	Tuesday	Wednesday	Thursday	Friday	Saturday
31					1	2
3	4	5	6	7	8 Mahashivratri	9
10	11	12	13	14	15	16
17	18	19	20	21	22	23
24 Holika Dahan	25 Holi	26	27	28	29 Good Friday	30

www.santosh.ac.in
admissioncell@santosh.ac.in



**Affordable &
High Quality
Healthcare
Services**



April
2024

SUN	MON	TUE	WED	THU	FRI	SAT
	1	2	3	4	5	6
7	8	9	10	11	12	13
14	15	16	17	18	19	20
21	22	23	24	25	26	27
28	29	30				

Santosh Matra Shishu Suraksha Yojana-Absolutely Free Services for Expectant Mothers & New Born
State-of-the-Art Intensive Care Services



Calendar Planner for **April 2024**

Sunday	Monday	Tuesday	Wednesday	Thursday	Friday	Saturday
	1	2	3	4	5	6
7	8	9	10	11 Id-UI-Fitr (Ramadan Eid)	12	13
14 Birthday of Dr. Bhim Rao Ambedkar	15	16	17 Shri Ram Navmi	18	19	20
21 Mahavir Jayanti	22	23	24	25	26	27
28	29	30				

www.santosh.ac.in
admissioncell@santosh.ac.in



Research Ecosystem



Well-established Central Research Facility



More than 100 National / International MOU's for Research & Faculty Development



IIC 3.5 Star Rating in 2022-23



1200+ Research paper publications in Indexed National and International Journals



May 2024

SUN	MON	TUE	WED	THU	FRI	SAT
			1	2	3	4
5	6	7	8	9	10	11
12	13	14	15	16	17	18
19	20	21	22	23	24	25
26	27	28	29	30	31	

- Ithenticate software for Plagiarism
- Stata software for Statistical analysis
- Scopus database
- 93 Patents / Copyrights

www.santosh.ac.in
admissioncell@santosh.ac.in



Calendar Planner for **May 2024**

Sunday	Monday	Tuesday	Wednesday	Thursday	Friday	Saturday
			1	2	3	4
5	6	7	8	9	10	11
12	13	14	15	16	17	18
19	20	21	22	23 Buddha Poornima	24	25
26	27	28	29	30	31	

www.santosh.ac.in
admissioncell@santosh.ac.in



**Perfect
Destination for
all your Medical
Aspirations**



June
2024

SUN	MON	TUE	WED	THU	FRI	SAT
30						1
2	3	4	5	6	7	8
9	10	11	12	13	14	15
16	17	18	19	20	21	22
23	24	25	26	27	28	29

Well established National Dental Bioethics Unit is a testament to promote ethical practices in Dentistry and shaping the path to a better tomorrow



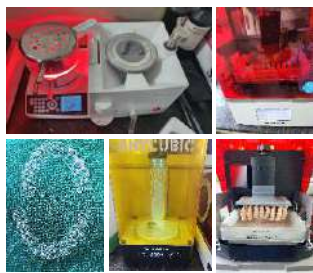
Calendar Planner for June 2024

Sunday	Monday	Tuesday	Wednesday	Thursday	Friday	Saturday
30						1
2	3	4	5	6	7	8
9	10	11	12	13	14	15
16	17 Id-UI- Juha (Bakrid)	18	19	20	21	22
23	24	25	26	27	28	29

www.santosh.ac.in
admissioncell@santosh.ac.in



We Care... Because your Life matters



State-of-the-art In-House Aligner Fabrication Lab



Emergency Care



ICU



Dialysis Unit

July 2024

SUN	MON	TUE	WED	THU	FRI	SAT
	1	2	3	4	5	6
7	8	9	10	11	12	13
14	15	16	17	18	19	20
21	22	23	24	25	26	27
28	29	30	31			

In-House Aligner Fabrication Lab; Dialysis Unit; Neurosurgery; Cath lab; Emergency Care

www.santosh.ac.in
admissioncell@santosh.ac.in



Calendar Planner for July 2024

Sunday	Monday	Tuesday	Wednesday	Thursday	Friday	Saturday
	1	2	3	4	5	6
7	8	9	10	11	12	13
14	15	16	17 Moharram	18	19	20
21	22	23	24	25	26	27
28	29	30	31			

www.santosh.ac.in
admissioncell@santosh.ac.in



**Institute For Your Future
that creates a Legacy**

Ranked# **9**th amongst Private Medical Universities across PAN India



Rank	University Name	State	Total Score
6	SRI MEDICAL COLLEGE HOSPITAL AND RESEARCH CENTRE, TIRUNELVELI	Tamil Nadu	882.00
7	SRI BHARAT KUMAR MANAVATI'S NARAYANA UNIVERSITY, CHANNarayana	Karnataka	880.04
8	K.S. REDDY MEDICAL ACADEMY, CHITTOOR	Karnataka	876.3
9	SANTOSH UNIVERSITY, GHAZIABAD	Uttar Pradesh	874.14
10	THE GLOBAL UNIVERSITY OFFERED TO BE GRANTED TO THE UNIVERSITY	Puducherry	866.65
11	DR. D. V. PATIL VIDYAVATHI DEEMED TO BE UNIVERSITY, PUNE	Maharashtra	862.51

by Outlook-ICARE Rankings 2023 "India's Best Universities"



August
2024

SUN	MON	TUE	WED	THU	FRI	SAT
				1	2	3
4	5	6	7	8	9	10
11	12	13	14	15	16	17
18	19	20	21	22	23	24
25	26	27	28	29	30	31

'A' Grade Institute in the UP Rating Cycle 2023 and Upholding the Highest Quality Standards
Recognized as Top 10 promising MBBS Colleges in India 2023 Higher Education Review
9th Rank by Outlook - ICARE Rankings 2023



Calendar Planner for August 2024

Sunday	Monday	Tuesday	Wednesday	Thursday	Friday	Saturday
				1	2	3
4	5	6	7	8	9	10
11	12	13	14	15 Independence Day	16	17
18	19 Raksha Bandhan	20	21	22	23	24
25	26 Janmashtami	27	28	29	30	31

www.santosh.ac.in
admissioncell@santosh.ac.in



International Collaborations



DPU, Bangkok



Perm State Medical University, Russia



Lincoln University College, Malaysia



SPU, Bangkok



Mari University, Russia



Wilmington Metropolitan University, USA

September 2024

SUN	MON	TUE	WED	THU	FRI	SAT
1	2	3	4	5	6	7
8	9	10	11	12	13	14
15	16	17	18	19	20	21
22	23	24	25	26	27	28
29	30					

Investing into the future Nationally & Globally

www.santosh.ac.in
admissioncell@santosh.ac.in



Calendar Planner for **September 2024**

Sunday	Monday	Tuesday	Wednesday	Thursday	Friday	Saturday
1	2	3	4	5	6	7
8	9	10	11	12	13	14
15	16 Id-A-Miladunarvi / Barawafat	17	18	19	20	21
22	23	24	25	26	27	28
29	30					

www.santosh.ac.in
admissioncell@santosh.ac.in



Limitless Learning at Santosh



October 2024

SUN	MON	TUE	WED	THU	FRI	SAT
		1	2	3	4	5
6	7	8	9	10	11	12
13	14	15	16	17	18	19
20	21	22	23	24	25	26
27	28	29	30	31		

To pursue a career for limitless possibilities in
Medical & Dental Education and Research Excellence

www.santosh.ac.in
admissioncell@santosh.ac.in



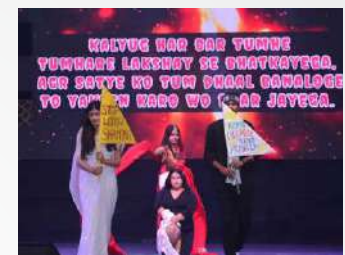
Calendar Planner for **October 2024**

Sunday	Monday	Tuesday	Wednesday	Thursday	Friday	Saturday
		1	2 Gandhi Jayanti	3	4	5
6	7	8	9	10	11	12 Dussehra
13	14	15	16	17	18	19
20	21	22	23	24	25	26
27	28	29	30	31		

www.santosh.ac.in
admissioncell@santosh.ac.in



Empowering students through
Holistic Learning and evolving
them as **Leaders in Healthcare**



November
2024

SUN	MON	TUE	WED	THU	FRI	SAT
					1	2
3	4	5	6	7	8	9
10	11	12	13	14	15	16
17	18	19	20	21	22	23
24	25	26	27	28	29	30

Approach to teaching that focuses on academic and social needs of students

www.santosh.ac.in
admissioncell@santosh.ac.in



Calendar Planner for **November 2024**

Sunday	Monday	Tuesday	Wednesday	Thursday	Friday	Saturday
					1 Diwali	2 Gowardhan Pooja
3 Bhaiyadooj / Chitragupt Jayanti	4	5	6	7	8	9
10	11	12	13	14	15 Gurunanak Jayanti / Kartik Purnima	16
17	18	19	20	21	22	23
24 Guru Teg Bahadur Shahid Diwas	25	26	27	28	29	30

www.santosh.ac.in
admissioncell@santosh.ac.in




**Alumni
Network ...
Changing
the World**



December 2024

SUN	MON	TUE	WED	THU	FRI	SAT
1	2	3	4	5	6	7
8	9	10	11	12	13	14
15	16	17	18	19	20	21
22	23	24	25	26	27	28
29	30	31				

Santosh
Alumni
Association

- 73 Holding High Ranking Administrative Positions
- 56 Pursuing Higher Studies
- 7 Working in Research Institutes

- 58 Working as Senior Residents
- 455 Servicing Faculty
- 286 Self Employed

www.santosh.ac.in
admissioncell@santosh.ac.in



Calendar Planner for **December 2024**

Sunday	Monday	Tuesday	Wednesday	Thursday	Friday	Saturday
1	2	3	4	5	6	7
8	9	10	11	12	13	14
15	16	17	18	19	20	21
22	23	24	25 Christmas	26	27	28
29	30	31				

